

ANNUAL REPORT
2013
MAKING
INROADS

VISION

2

MESSAGE

3

OUR SERVICES

5

MAKING INROADS

7

IMPACT IN NUMBERS

17

PEOPLE & PARTNERSHIP

19

TEAM

23

FINANCIAL HIGHLIGHTS

25



Inspired by **Love**,
we are committed to
build a strong nation
by raising an
exemplary next generation
and strengthening families.



CHAIRMAN
Wong Koon Tatt

2013 has been another eventful and impactful year for GG. In many ways, we've made inroads to new communities, new schools, new endeavors; giving us the opportunity to impact new lives. At the same time, we continue to build on our existing relationships; believing that trust at all levels is key to the success of our organization including with those whom we serve, be they government and corporate partners, communities or schools.

GG had the opportunity to collaborate with government agencies and corporate partners on meaningful projects to positively impact the community and nation. We also had the opportunity to speak with national media on issues relevant to the next generation, families and underserved communities.

We express our sincere appreciation to all our partners, from the private and public sector, who have believed in us and worked with us over the years. We value you immensely. Together, let's build respect and honor among people through what we do and help foster harmony in our country. We are privileged to contribute our bit towards nation building. Thank you all.



EXECUTIVE DIRECTOR
Daniel Tan

My role model, Mother Teresa, never fails to inspire me with her genuine service to people. She once said that, "love begins at home, and it is not how much we do, but how much love we put in the action that we do." People from all walks of life received her, allowing her to enter their lives and leave lasting impact because she loved, sincerely.

This past year I caught a glimpse of what Mother Teresa modelled when I witnessed people we are privileged to serve in communities, homes, and schools, receiving us heartily into their lives. That, to me, is what making inroads is all about.

We have spent a number of years investing in these relationships and building trust. In this journey of making inroads to lasting impact, I've personally learnt what it takes to gain the trust of others; those whom I serve and whom I serve alongside. I am truly thankful for the opportunity to serve others regardless of race, religion and social background.

I express sincere appreciation to all our volunteers who have served and continue to serve alongside us. Thank you to all our corporate and government partners for entrusting us with resources, receiving us to be part your CSR vision and nation-building efforts. I look forward to a greater year ahead as we join hands serving our nation and communities.

Lastly, to my outstanding colleagues whom I have utmost respect for, thank you. Mahatma Gandhi once said, "Where there is love, there is life." I have felt so much love in our little GG family, because we loved, sincerely. Love has enabled us to make inroads in all that we do.

WHY WE DO WHAT WE DO

It is our dream to see our nation thrive. We believe that by investing in the lives of our next generation, strengthening relationships within families, schools & communities, our nation grows stronger as a result.

Kids & Teens Services:
Building a safe, loving and secure environment in which children and teens from difficult circumstances can grow in a holistic manner; including & not limited to their intellectual, social & emotional development.

Family Services:
Working within communities to build strong families by strengthening relationships and equipping them with practical tools to thrive.

Counselling & Care:
Providing intervention care and support for children, youth and families through their times in need.

SUPPORT FOR FAMILIES

We believe that family is a key component in the development of individuals therefore we always address the next generation in the context of family.



INVOLVE THE COMMUNITY

Involving the private & public sector, community leaders & members in our integrated stakeholder approach towards sustainable community transformation

Strategic Alliances:
Partnering with companies and organizations to drive positive social changes through creative solutions combining business competencies and insights in unmet community needs.

Volunteer Management:
Providing opportunities for people to grow in ownership and positively impact the community through volunteerism.

INVEST IN INDIVIDUALS

We invest in the lives of our next generation in schools, children homes, and the underserved community; tackling issues that are relevant to them.

Cyber Wellness:
Instilling balanced online and offline lifestyle values.

Life Skills:
Equipping youth with right perspectives and tools to make better life choices.

Leadership and Mentoring:
Building young exemplary leaders through character development and mentorship.

Education:
Helping children & teens bridge learning gaps through individualized academic guidance and mentorship.

Service Learning:
Providing individuals opportunities to learn about life through serving while applying knowledge to address the genuine needs of the community.

In **2013**, GG reached out to:



Over **4000** families



In **5** different communities



7,800 students



In **21** schools



8 Universities and Colleges



6 Children homes



IMPACT IN STORIES: HOW WE'VE DONE IN 2013

2013 was a year of making inroads towards lasting, tangible impact. Progress was made, not just in the number of people we impacted, but also in the depth in relationships with communities, schools, homes that we serve and the corporates & government bodies that we partner. Most significantly, the trust gained has enabled us to widen our sphere of influence and impact more lives. We've achieved more tangible and measurable results than before, while the people that we serve and partner continue to grow in ownership and vision.

TAMAN PRIMA SELAYANG

Engaging Families, Children & Youth In Ways Current And Relevant To Them

This is our third year in Taman Prima Selayang; in addition to on-going programs, we launched Community Support Group (CSG) for community members to connect & encourage each other in areas such as: family, children, parenting, finances, health and well-being; also developing a sense of ownership & belonging as they journey towards being positive influences in their families & community.



Pusat Bimbingan Pelajar (PBP) our academic guidance and mentorship program has produced significant results in student enrichment and growth in attendance numbers.

PBP received a grant from Hong Leong Foundation, providing for new uniforms, books and mini-scholarships motivating students to stay in school, while new partner Shell Malaysia upgraded the hall to create more conducive space for study and play.

We celebrated Deepavali with 1,000 residents and their families; made possible with corporate partner Danone-Dumex Malaysia (DDM) and Sunway University students. The theme, "be a light in our community" was to instil ownership, unity, hope in families for a better future while inspiring them to be a positive influence.



One student from a "remove" class scoring only E's for her English, scored a B (76%) in her recent exam. The other, scoring B's in her mathematics finally got an A (81%) in May, and now 95% in the term exam. Having always said that she cannot get A's, thanks to the encouragement and teaching from her mentor, she now has.



It's amazing to see how people with so little, when empowered with knowledge and instilled with confidence, transformed and went so much further

Bank Negara Volunteer, for Financial Literacy Program



PPR SRI PANTAI

Building Resilience For Families & Enriching Lives

PRUkasih, a free financial protection plan developed with partner, Prudential Assurance Malaysia Berhad (PAMB), was made available to the whole community of PPR Sri Pantai and has covered 241 households (As at December 2013). 15 working families benefited from PRUkasih when the breadwinner encountered unfortunate circumstances last year.

Our Cyber Wellness team collaborated with Pusat Internet 1Malaysia (PI1M) to equip parents and youth with principles for healthy & balanced lifestyles, challenging them to be positive online users and prioritizing life goals.

We brought youth from PPR Sri Pantai to our Cyber Training Centre for G.A.M.E4Life sessions, helping them learn life principles through gaming.

// Terima kasih kepada pihak Generasi Gemilang di atas kesudian pihak GG menerangkan serba sedikit tentang program yang di jalankan oleh pihak GG yang saya percaya amat berguna kepada komuniti di PPR Kerinchi ini. Saya berbesar hati sekiranya pihak GG boleh menjalankan beberapa program di sini dengan kerjasama Pusat Internet 1 Malaysia PPR Kerinchi

untuk komuniti setempat //

Mohamad Aminur Bin Hasan,
Pengurus PI1M PPR Kerinchi

Chandarasekaran, a driver with a family of 5 to support, met with an accident and was admitted for surgery for a broken leg. With him unable to work, PRUkasih provided temporary relief for his family in the form of food vouchers and housing allowances. This gave him, the sole breadwinner, peace of mind that his family would still be provided for during his recovery.



PPR LEMBAH SUBANG

Building Deeper Relationships With The Community

We empowered over 40 single mothers with practical business skills and opportunities to expand their income generating capacity and provide better for their families through the DOTS (Developing Opportunities Through Service) with Taylor's Business School. The goal of DOTS is to help women realise their strengths, self-worth and become positive influences in their community.

We provided health-screen services to over 300 residents with Taylor's School of Medicine, improving their understanding about health issues. We upgraded the Pusat Aktiviti Kanak-Kanak (PAKK) Room with Taylor's Hostel Management, building a cheerful, comfortable environment more conducive for children's learn & play. We spent time reading and journalling with 40 children inspiring the joy of learning in them.

We participated in KPWK's (Ministry of Family, Women & Community Development) first Social Care Carnival; taking the opportunity to connect with families and the next generation, listening to their needs and engaging other agencies about partnership to better meet these needs.



// Hari ini banyak saya belajar terutamanya tentang sentiasa menghadapi apa jua rintangan-rintangan datang tanpa di duga. Kedua, berfikir di luar kotak, tak salah jika buat di luar kebiasaan. Ketiga, jangan dengar khabar angin, jika dengar jangan sampaikan atau kembali kepada punca. Tak sabar kembali lagi, harap lebih menarik lagi //

Jamilah Kartnie,
DOTS participant



RUMAH KANAK-KANAK TENGGU BUDRIAH

Achieving Tangible Results And Impact In The Lives Of Children

The health & hygiene of babies continue to improve with Danone-Dumex Malaysia (DDM)'s long-term hygiene project achieving its highest hygiene score in 1.5 years. Through training programs we empowered caretakers to improve on helping children in the home develop holistically.

Our LINUS program, with the help of dedicated volunteers, mentored 40 children helping to build their foundational literacy and self confidence for a better academic future.



Through trainings, I've been exposed to so many different ideas, avenues for improvement and learning. I now know so many different approaches to teaching and caring for the children. I also realise that our children need love. GG has helped me realise that and how to express love to the children better. What's more, their learning has improved. Starting from zero before, the children are now able to write, draw and count. This has given them so much hope and confidence

RKKTB caretaker

Service Learning has taught me to be patient with other people and to really listen from the heart. It truly was a great experience at the children's home; I learnt how to handle children from difficult circumstances and communicate with them. I may have taught them 'suku kata' [syllables] but they taught me how a loving person should be

Yuen Theng,
Student Volunteer

KG CHEMPAKA

Impacting Lives, Young & Old

We launched Gold Club to connect with senior citizens making their retirement years an enjoyable time spent together. Activities include karaoke sessions, outdoor visits, and shared meals.

We challenged youth to become positive influences in their community and make better life decisions through G.A.M.E.4Life, an experiential learning program applying online gaming strategies to real life decisions.

We hosted traditional Chinese New Year and Dumpling Festival with over 1,000 residents, celebrating the reunion of family and all that comes with it: love, joy, unity and harmony.



PURE LIFE SOCIETY CHILDREN'S HOME

Going Beyond The Surface, Inspiring Children To Reach Their Full Potential

We partnered with Nippon Paint Malaysia (NPM) to create a joyful and secure environment conducive for learning and development. Beyond the physical improvements to the home, our child development programs nurture creativity, home ownership and self-worth in the children while our licensed counsellors were entrusted with their in-depth intervention care and support.



YOUTH DEVELOPMENT

PELAJAR GENERASI GEMILANG

We mentored students in SMK Tropicana through our school transformation project, Pelajar Generasi Gemilang (PGG), building positive values, character and purpose into lives. We also received help from 175 staff from 30 Maybank branches to paint the school hall and RM 10,000 to run Pusat Bimbingan Pelajar (PBP) sessions in 2014.

Programs are very well organised and coordinated. Students bonded well with facilitators, many felt that they could use and apply what they've learnt. It was very encouraging for counsellors to observe the quick and spontaneous answers that the students were presenting and their point of view, which was spoken without hesitation. Facilitators made students feel accepted and that their views were appreciated. Subject matter discussed in the program was very relatable to students and what they are going through. Facilitators touched our students' lives with warmth, kindness, and genuine compassion. Students connected well with facilitators' enthusiasm and sincerity. I commend the way GG did not force students to get involved but instead reminding and encouraging them. A very good program for our students. Congratulations on really touching our students' lives and making a difference

Counsellor,
SMK Tropicana

We were featured in Malaysian print media and news wires impacting our next generation of young leaders at the US-Malaysia Young Leaders Summit with the US Embassy, invited to speak on NTV 7's Breakfast Show on issues facing our next generation and recognised by the Prime Minister's Office as an 'Everyday Malaysian Hero' for our contribution towards nation-building efforts.



LEADERSHIP & MENTORING

It was growth from previous years for Leadership & Mentoring; impacting 872 students in 8 schools across Malaysia.

Without Verve, my life will be very depressed, I learn how to live through the GG sessions

Male student,
Sri Sempurna, Cheras

It is the most interesting talk I have ever attended and never once did I feel sleepy, fantastic event!

Female student,
SMK Ave Maria, Ipoh

CYBER WELLNESS

Cyber Wellness reached more than 3,800 students in 14 schools across Malaysia, including Sabah. This year, Cyber Wellness also reached the community of Kg Chempaka and PPR Sri Pantai with G.A.M.E4Life.

Pihak PI1M amat berbesar hati sekiranya GG turut bekerjasama untuk mengadakan beberapa aktiviti berkaitan yang boleh memeriahkan lagi sambutan semasa program itu dijalankan. Pihak PI1M dan Nusuara mengucapkan ribuan terima kasih atas sokongan dan kerjasama yang diberikan oleh GG dalam usaha untuk membangunkan komuniti di PPR Pantai ini

Mohd Rasyadan Bin Zulkifli,
Pengurus PI1M, PPR Sri Pantai

SERVICE LEARNING

Service Learning connected 760 students from 4 universities to 7 communities on 20 separate projects; providing them the opportunity to apply academic knowledge to address genuine community needs while building civic engagement.

I have learned a lot beyond what my text book offers. It was indeed an enlightening experience. Helping others is a two-way relationship, which has helped me develop my soft skills, widened my perspective while enabling me to give to someone in need

Ng Chun Hau,
Student

Being a part of service learning in Generasi Gemilang is really a precious experience for me. I realized that love can really transform lives and my journey to create a difference in others life will continue although I have finished the service learning program

Wang Zhao Loon,
Student



IMPACT IN NUMBERS

IMPACT IN NUMBERS

CLIENTS	2011	2012	2013
YOUTHS	15,000 (Repeat participants)	16,909 (repeat participants) 9,546 (unique participants)	10,252 (repeat participants) 7,872 (unique participants)
SECONDARY SCHOOLS	12	19	21
UNIVERSITIES / COLLEGES	5	7	8
ORGANISATIONS	19	11	10
PARENTS	1,000	785	62
COMMUNITIES			
UNDERSERVED COMMUNITIES	3	3	6
CHILDREN HOMES	1	1	6
CHILDREN/YOUTHS	325	422	650
HOUSEHOLDS	2,600	2,761	7,326
VOLUNTEERS			
REGISTERED VOLUNTEERS	200	364	477
STUDENT VOLUNTEERS	350	592	760
CORPORATE VOLUNTEERS	450	450	635



PEOPLE & PARTNERSHIP

PEOPLE & PARTNERSHIP

PEOPLE

Our staff team grew to 23 full time and 2 part time staff, while our volunteer base has expanded to 477 active volunteers, with over 635 corporate volunteers and 760 student volunteers. We invest in the training and development of our volunteers to ensure that serving the community is an enriching learning experience. This will allow the volunteers to have a greater sense of ownership and greater impact on the program, apart from personal growth. Our training programs equip volunteers with skills such as people management, public speaking & audience engagement, team teaching, effective mentoring.

PARTNERS

Financial and in-kind support from corporations, foundations and government partners play an important role in allowing us to take our vision further. These strategic alliances have enabled us to improve and expand our service and care to the communities we serve, leveraging on industry expertise and volunteer support. We are continuously encouraged to work with committed partners - people who share our passion to touch lives whether on a community level or nation-wide.

Through these partnerships, we have witnessed the power of cross-sectorial, public-private sector collaboration and we are tremendously excited moving forward to continue to be part of innovative and sustainable solutions to our mission.



Nippon Paint (M) Sdn Bhd

Nippon Paint Malaysia brought color, hope and joy through their Colorful Dreams project to 280 children in 3 homes across the country. Selected welfare homes are professionally re-painted and repaired to improve living spaces, while we run our Thumbprintz program – instilling self-worth and hope for a brighter future into the hearts of the children.

“The commitment and ease of working with Generasi Gemilang has been an asset. They work with heart and have a genuine interest in ensuring the project’s success. A very capable team with expertise in assisting any corporate organization in carrying out a successful CSR program”

Nippon Paint Malaysia

CIMB Foundation

CIMB Foundation funded an English Literacy Program for 67 working adults in a low-income community, providing learning opportunities with the hope of increasing participants’ employment capacity.

Shell Malaysia

A project team from Shell Malaysia got their hands dirty to clean and re-paint a community hall utilised by 115 children and adults weekly. The team further provided bookshelves and sand play therapy tools to promote the educational development of these underserved community children.



DANONE DUMEX



Danone Dumex (Malaysia) Sdn Bhd

2013 marked the 3rd year of partnership with Danone Dumex Malaysia in executing “Live Life, Touch Lives”, a CSR platform that aims to improve hygiene and nutrition of underserved mothers and children in Malaysia. This year, we expanded our reach to 1 new children home in Sabah and 1 new underserved community bringing hygiene and nutrition training to adults and children alike.

“Generasi Gemilang has proven to be an outstanding partner and their work with us to identify how we can support our vision of ‘nutrition for healthier Malaysian children’ through CSR activity has led to the actions we took with (RKKTB). I have really enjoyed seeing the positive impact we are having on those children’s lives but also I have just been so impressed with the way the team has embraced CSR activity and supported this across all functions”

Danone Dumex Malaysia

Tollyjoy Corporation (M) Sdn Bhd

TollyJoy provides safe & quality children items from their product range to a welfare home on a quarterly basis. Products given include bathing gel, sanitising equipment, clothes, teething toys and various other items needed in the day-to-day care of infants and toddlers. This has helped the home improve the quality of care provided to over 180 infants and simultaneously lower the home’s operating expenses.



Prudential Assurance Malaysia Berhad

2013 also marked the 3rd year of partnership with Prudential on PRUKasih, a unique financial protection plan designed for urban low-income families. Since its launch, PRUKasih has provided financial protection access to 4000 households in 3 underserved communities. This project has received the support of various governmental agencies as we work together to expand nationwide. We are not only expanding to new communities in 2014 but also introducing financial education in schools across Malaysia. We aim to reach out to 50,000 more households and individuals in the next 5 years.

“Sharing a common heart, GG is the extension of our eyes, ears, hands and legs. Since we piloted PRUKasih 3 years ago, GG has helped us to reach out to the communities and build a bridge of trust and hope. Their dedication, commitment and their willingness to go above and beyond their call of duty is the perfect representation of what Prudential stands for. It has been both a privilege and pleasure working with the dedicated and talented team from GG”

Prudential Assurance Malaysia Berhad

Hong Leong Foundation

Hong Leong Foundation provided a grant for our education program, Pusat Bimbingan Pelajar (PBP), covering program expenses schooling expenses aid (such as books, transport, uniforms) for 50 students over a full academic year. The grant also provides a unique achievement rewards system, where students are rewarded for high achievement in public examinations with savings.

Malayan Banking Berhad (Maybank)

Employees from several Maybank branches got together to clean and re-paint a school hall together with students under our Leadership & Mentoring program. This hall restoration activity has increased usable space within the school area and has been a turning point in our long-term school transformation model, resulting in a marked increase in school ownership amongst students.

Intercos Malaysia Sdn Bhd

Intercos joined us on our GLOW program, for teenage girls from children’s homes to grow into confident young women. The team shared their industry expertise on basic facial care providing hands-on practice and products for the girls to bring home.

intercos

HongLeong Foundation



BOARD OF DIRECTORS



Wong Koon Tatt
CHAIRMAN



Daniel Tan Kok Keat
HONORARY SECRETARY
& EXECUTIVE DIRECTOR



Stefanie Tan Yuen Yeng
TREASURER



Jacob Rabindranath Krishnan
ASSISTANT SECRETARY



Pn. Sri Datin Thong Nyok Choo
COMMITTEE MEMBER



Dato' Thong Kok Khee
COMMITTEE MEMBER



Freddie Acho Bian
COMMITTEE MEMBER

STAFF

As of January 2014

MANAGEMENT

Daniel Tan - Executive Director
Noelle Tan - Chief Operating Officer
Nicholas Foong - Head of Youth Development
Teri Choong - Head of Volunteer Management/Service Learning, Strategic Alliances

COMMUNITY DEVELOPMENT – FAMILY SERVICES

Bernice Cheah
Vicky Liew
Tang Yunn Hanm

COMMUNITY DEVELOPMENT – KIDS & TEENS SERVICES

Angeline Yap
Shealin Lee
Kwok Chin Hoe

EDUCATION

Simpson Khoo
Charissa Eunice Anak Winston

YOUTH DEVELOPMENT – CYBER WELLNESS

Keith Woo
Fabian William Story

YOUTH DEVELOPMENT – LEADERSHIP & MENTORING

Cheah Huay Phing
Charlene Teoh

YOUTH DEVELOPMENT – LIFE SKILLS

Yew Hui Ping

SERVICE LEARNING

Tan Jee Wang
Justine Thong

VOLUNTEER MANAGEMENT

Andrew Tan

STRATEGIC ALLIANCES

Melissa Ngiam
Daniel Lee
Clara Wan

PR & COMMUNICATIONS

Cheri Lim

ADMINISTRATION & HR

Gan Siew Ching

ACCOUNTS & FINANCE

Melissa Ngiam

COUNSELLOR

Ng Kit Yue



FINANCIAL HIGHLIGHTS

FINANCIAL HIGHLIGHTS

GOVERNANCE & ACCOUNTABILITY

OUR PROMISE

At GG, we recognize that every resource entrusted to us can transform our client's lives. We promise to manage the funds received honestly and will use it effectively to benefit our clients.

We take seriously the responsibility to maintain integrity and transparency in everything we do. Therefore, GG is committed to fulfilling the following:

- GG is governed by The Societies Act of 1966 and overseen by a Committee. The Committee establishes policies, sets budgets, monitors and reviews performance and operations. The Committee also charters the vision and direction for GG moving forward.
- The financial statements are prepared annually in accordance with applicable approved accounting standards.
- An annual audit is obtained in accordance with approved standards on auditing in Malaysia by an independent public accounting firm. The 2013 financial statements of GG has been concluded to give a true and fair view of the financial position and of the financial performance of the society in the Independent Auditors' report prepared by Baker Tilly Monterio Heng (Audit Firm No: AF 0117).
- Consistent management review and monitoring of operating costs to ensure that resources are optimized and within approved budgets. Project evaluations are also carried out to assess the ongoing effectiveness of our programmes in meeting our clients' needs.
- Ensure that donations and grants are used for their intended purposes and look to leverage funds for maximum impact.

REVENUE

GG is committed to our vision and we couldn't do this critical work without the generous support of our donors and partners.

In the financial year 2013, GG continued to develop existing and new partnerships in the private sector allowing to build upon our work. We were also able to invest in talented people who share our passion and amplify our program impact across a wider reach. We continued to build on that strength throughout 2013.

CONTRIBUTIONS

Contributions are funds donated to support GG's mission and programs. Of the amount, 56% came from individual donors, with the balance from various private and public organisations. These funds are received in the form of cash and cash equivalents throughout the year.

2013 has been a ground-breaking year for us as we saw a surge of support from individual donors, many of whom have been long-time supporters of GG.

These donations were compliant with our Donation Policy; refer to our website for more information on our policy.

EARNED INCOME

Earned Income is program service fees. These fees are received with regards to our programs and workshops conducted for schools and organisations.

We improved our earned income by 63% from 2012 through increased workshops and sessions for youth participants and increased scope of community programs in collaboration with private sector organisations.

GOVT FUNDING & GRANTS

Govt Funding & Grants received in 2013 were for 2 programs.

The first is the English Literacy Program which teaches basic conversational English to low-income community members in partnership with CIMB Foundation. 2013 marks the second and final year of this grant funding for the program.

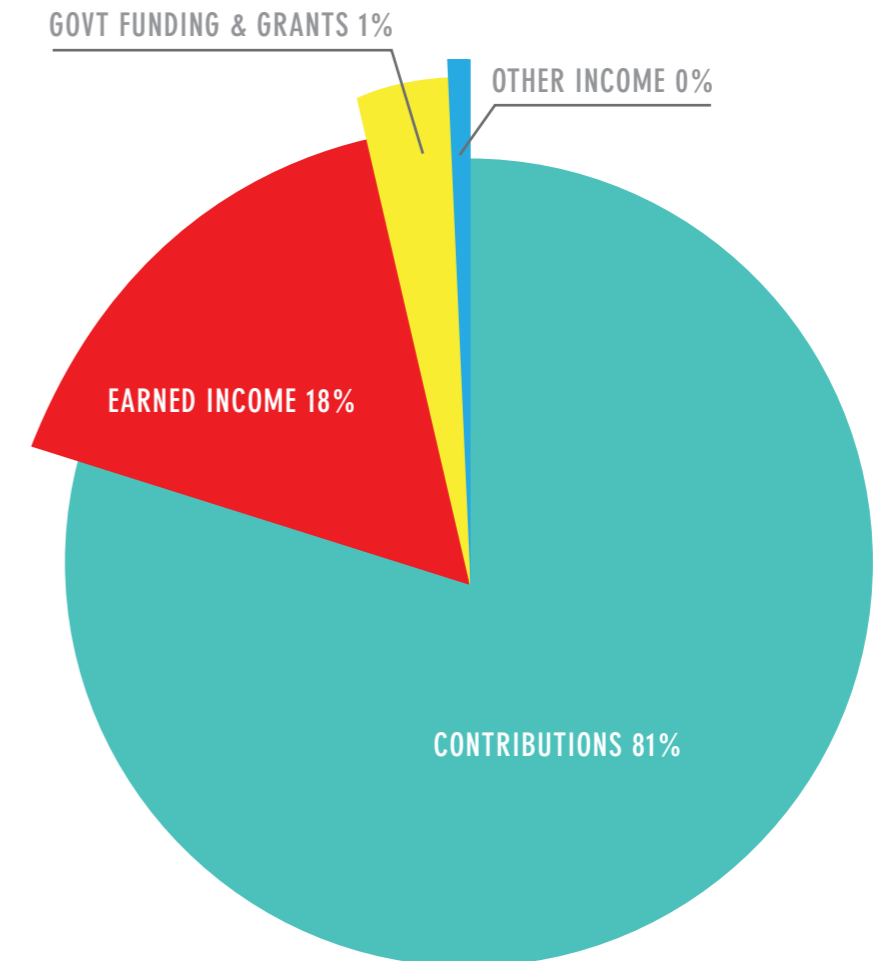
Additionally, Hong Leong Foundation granted funds in support towards our Pusat Bimbingan Pelajar program allowing us to provide more benefits to our students.

OTHER INCOME

Other income includes income from sale of t-shirt merchandise and membership fees received throughout the year.

GG recorded higher sales from merchandise following the launch of our bumper stickers.

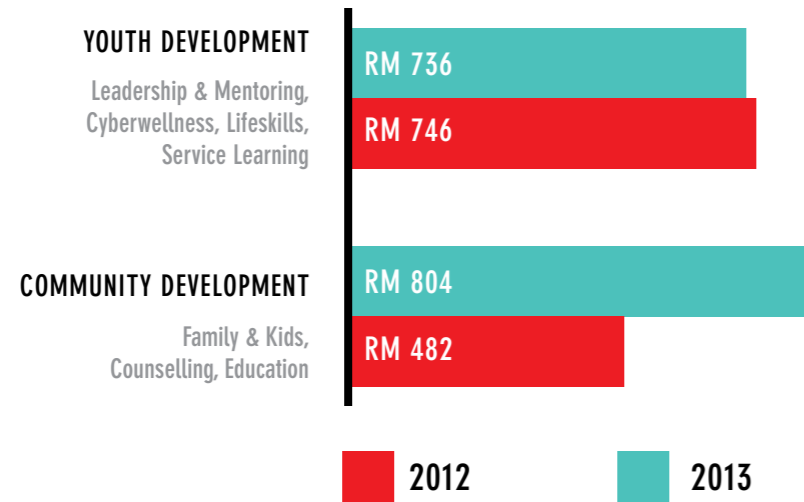
REVENUE BY SOURCE FY 2013



%		RM
81	CONTRIBUTIONS	1,410,558
18	EARNED INCOME	313,333
1	GOVT FUNDING & GRANTS	14,609
0	OTHER INCOME	8,036

EXPENSES

PROGRAM SPENDING BY DEPARTMENTS
FY2013, In RM'000



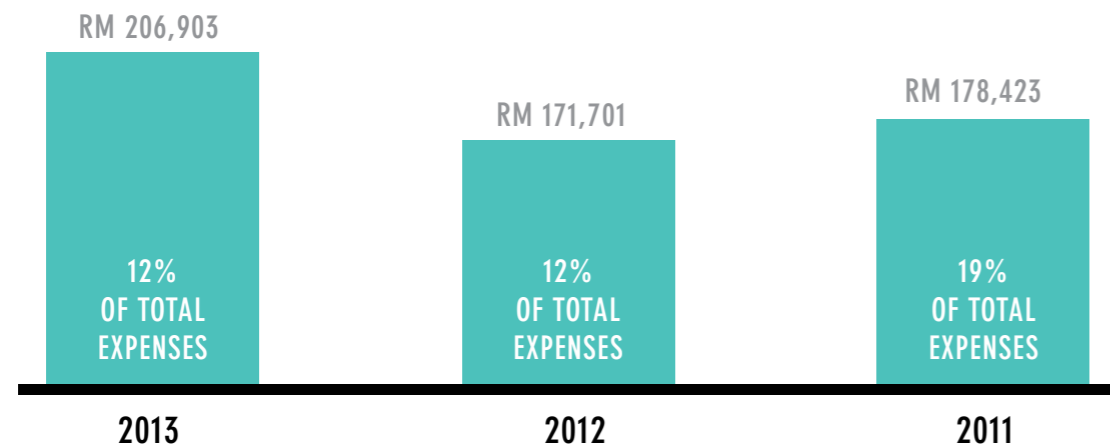
PROGRAM EXPENSES

Program Expenses includes program staff costs, program materials costs, related marketing expenses and directly attributable overhead costs.

While Youth Development spending has remained consistent in 2013, Community spending increased by 67% from 2012.

This was due to more activities and events ran in line with specific funding received from private sector organisations. Also, our education services expanded in 2013 to include new programs and higher frequency of existing programs.

GENERAL & ADMINISTRATIVE EXPENSES
(3-YEAR COMPARISON)

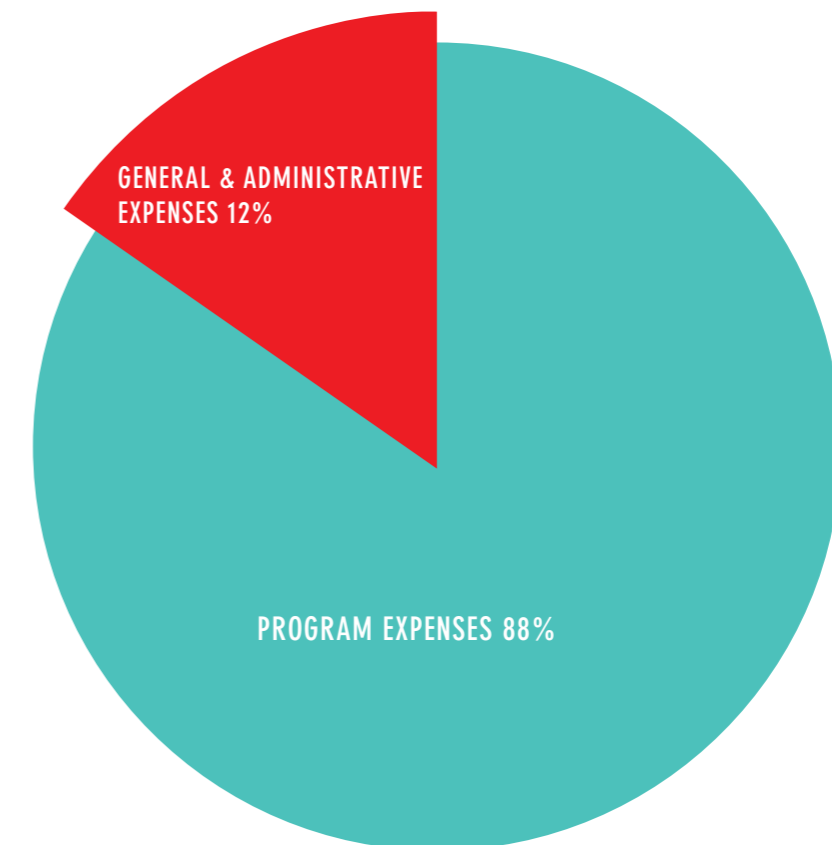


GENERAL & ADMINISTRATIVE EXPENSES

General & Administrative Expenses covers support staff costs, premise, administrative and merchandise expense.

In 2013, we have successfully been able to maintain these supporting service costs at 12% (2012: 12%) of our total expenditure in spite of our organisation's growth.

EXPENSES BREAKDOWN
FY 2013



%		RM
88	PROGRAM EXPENSES	1,539,633
12	GENERAL & ADMINISTRATIVE	206,903

FINANCIAL STATEMENTS

STATEMENT OF INCOME & EXPENDITURE

	FOR THE YEAR ENDED DECEMBER 31,	
	2013	2012
INCOME		
Earned Income	313,333	191,986
Contributions, Govt Funding, & Grants	1,425,167	1,201,793
Other Income	8,036	5,800
TOTAL INCOME	1,746,536	1,399,579
EXPENSES		
Program Services	1,539,633	1,227,878
General & Administrative Expenses	206,903	171,701
TOTAL EXPENSES	1,746,536	1,399,579
INCREASE/ (DECREASE) IN NET ASSETS	-	-

BALANCE SHEET

	AS AT DECEMBER 31,	
	2013	2012
ASSETS (current)		
Other receivables, deposits & prepayments	205,193	78,165
Inventories	6,121	5,386
Cash and bank balances	339,923	105,091
TOTAL ASSETS	551,237	188,642
Less:		
LIABILITIES (current)		
Other payables & accrued expenses	(19,038)	(10,379)
NET CURRENT ASSETS	532,199	178,263
FINANCED BY:		
Designated Funds	532,699	178,763
Accumulated Funds	(500)	(500)
	532,199	178,263



Persatuan Kebajikan Generasi Gemilang Kuala Lumpur dan Selangor, or Generasi Gemilang (GG) in short, is a not-for-profit welfare organisation committed to building a strong nation by raising exemplary next-generation and strengthening families. We believe that Love transforms lives; therefore our work inspires hope in people and empowers them to live life to their fullest potential. These people are children, youth, families, schools, corporations and community at large. Governed by a Board of Directors, GG is based in the Klang Valley and conducts services throughout Malaysia. GG was officially registered under the Societies Act 1966 on March 5, 2010. To date, GG has impacted 37, 000 lives and counting.